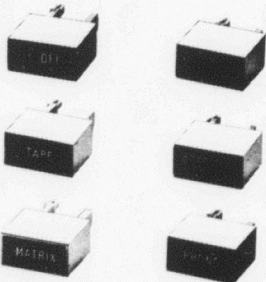


ITT

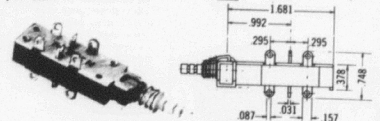
ITT Schadow inc

NEED GRAPHICS?

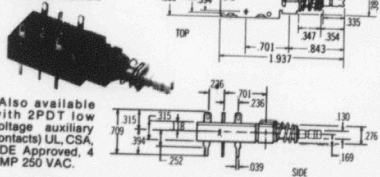
Several examples are shown below. Your specific requirements quoted on request. (Graphics pictured on FA 100 push buttons)



N30 TV-5 rated power switches
(Also available with 2PDT low voltage auxiliary contacts) UL, CSA, VDE Approved.



Series NE 15/F line switches



(Also available with 2PDT low voltage auxiliary contacts) UL, CSA, VDE Approved, 4 AMP 250 VAC.

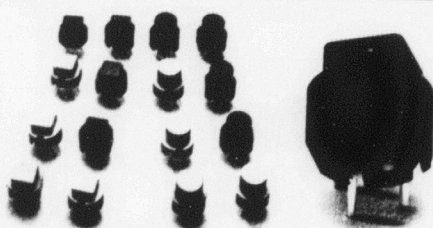
D6 Series Key Switches

The D6 is a single pole, single throw normally open key-switch specially designed for digital electronic control. Its small size enables keyboard design with minimum center spacing of .500 (12.70 mm). The commoned terminals offer the possibility of X, Y coding by using a single sided printed Circuit Board.

Built-in buttons (square or round) are available in several colors and have been designed to fit directly onto front panels.

The total travel of .031 (0.80 mm) combined with the snap effect provide the user with a smooth, gentle yet positive tactile feedback.

- ☐ Tactile feedback
- ☐ Three package styles
- ☐ Eight colors
- ☐ Commoned terminals
- ☐ Small size .500 (12.70 mm)
- ☐ Low cost



ELECTRICAL DATA

Electrical diagram SPST NO	
Contact resistance	<20 mΩ
Breaking capacity	10 mA/35 VDC
Insulation resistance	100,000 MΩ
Dielectric Strength	500 V
Inter-terminal capacity	1 pF
Contact bounce	3 ms
Life (nominal current and voltage)	500,000 Cycles
Temperature range	-20°C to +65°C (-4°F to +149°F)
Climatic category	21 days
Solder ability	235°C during 5 seconds

digitast
modular electronic
switch input component

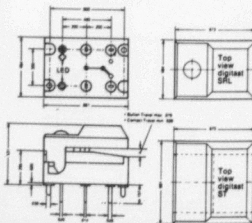


digitast
SR 12.3mm wide x 17.1mm
ST 17.3mm wide x 17.1mm (pictured)



digitast
SRL ILED factory or customer installed
12.3mm wide x 17.1mm (pictured)
STL ILED factory or customer installed
17.3mm wide x 17.1mm

Digitast for use with DIP packages, consistent tactile feel, SPDT momentary spring loaded contact, less than 1 ms contact bounce, 24V 10ma or 60V 100ma ratings. Mechanical life greater than 1 million operations. Available with built in LED. PCB mounting. Hot stamped graphics available.



VOL 2/758

Reference GOLD BOOK when you call or write.

Electronic Design's

low cost
3 point contact
highest integrity
disc switch
modular electronic components



The Disc switch is built around two contact diaphragms separated by an insulating material. The profile of each of these two diaphragms is such that, under the action of applied pressure on the upper dome, it is momentarily collapsed, making instant positive, 3 point contact with the lower diaphragm.



- High Reliability... 10 X 10⁶
- Self Cleaning
- Broad Range of Switching Power... from a few milliwatts to 30 watts.
- Low Bounce (less than 100 milliseconds)

MDP Push button switch assembly with a momentary action contact and incorporating the unique design disc switch. The switch is designed for direct insertion into printed circuit boards. Two principal advantages of the MDP switch are the short stroke (only 0.5mm) and the crisp tactile feel. Contact arrangement: single, normally 4mm long. SOLDERING: since the disc switch is completely sealed, it can be flow soldered. PUSH BUTTONS AND KEYS: dimensions (mm) 12.7 x 12.7 x 3.4 (7.62 with key). STANDARD COLORS: red, blue, light grey, dark grey.

PUSHBUTTON SWITCH SERIES

MP Series: The MP Series Sub Miniature Push Button Switch is an economical multi-position push button with 1 to 8 poles per module which may be operated in momentary, push push or interlock modes.

F Series: The F Series Miniature Push Button Switch forms a versatile system of modules designed for reliable performance in low voltage (dry circuit) applications.

C Series: The C Series Standard Push Button Switches are designed for use in products requiring extreme reliability, having up to 8 poles per module with lampless status indicators or illuminated buttons.

KEY SWITCH SERIES

Digitast Series: The Digitast Series Key Switch is specially designed for use with dual in-line packages, yet offers a wide variety of options.

REK Series: The REK Series Key Switch is designed for switching low current loads utilizing a patented contact system resulting in high reliability and long operating life.

Disc Series: The Disc Series Key Switch is built around two contact diaphragms separated by an insulating material designed for instant contact with the advantage of being a self-cleaning contact with tactile feedback.

D6 Series: The D6 Series Key Switch is a single pole, single throw key switch designed for digital electronic control allowing keyboard design with a minimum center spacing of .500 (12.70).

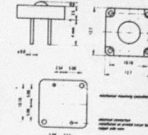
SLIDE SWITCH SERIES

CL-A Series: The CL-A Series Slide Switch is a multiposition slide switch for PCB mounting or conventional wiring in applications of test/measuring equipment, receivers, etc.

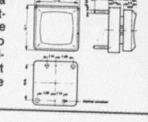
ROTARY SWITCH SERIES

RT-A Series: The RT-A Series Rotary Switch is a PC or panel mounted switch with the shaft perpendicular to the PCB for mounting with components such as displays and indicators.

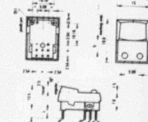
RBP 12 Series: The RBP 12 Series Rotary Switch is designed with index and contacts contained within a single molded plastic case with many contact variations available.



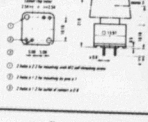
MD Disc module: Extra-flat momentary contact module. Shorter stroke configuration installable directly on printed circuit board. Enables you to design your own keyboard adapted to your own specific needs.



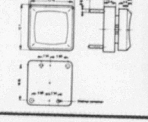
ED Push button switch assembly with a momentary action contact and incorporating the unique design disc switch. The switch is designed for direct insertion into printed circuit boards. Two principal advantages of the MDP switch are the short stroke (only 0.5 mm) and the crisp tactile feel.



DMB Modular Rocker Disc Switch: Momentary contact for use on printed circuit board. Customer design and installation from bread board through production. Can be mounted in line on 15.24 MM/600" centers or in a matrix (.600" x .800"). Available with one or two L.E.D.'s (red, green or yellow). Engraving or hotstamped graphics available.



TFD Alpha-numeric data entry keyboard style switch: Size, stroke and touch approximate industry standard for data entry switches. Low profile.



Please write to your nearest Sales Office or Distributor, or to ITT Schadow for a free copy of the 1982 ITT Schadow product catalog. This catalog covers the following switch series...

© 1982 International Telephone and Telegraph Corporation
Printed in U.S.A. • All Rights Reserved

ITT

ITT Schadow inc

GOLD BOOK 82/83

See, VOL 1, for Local Sales Outlets

VOL 2/759

8081 Wallace Road, Eden Prairie, MN 55344 • (612) 934-4400
TWX 910-576-2459 • TELEX 29-0556

Manufacturing facilities in
Minneapolis, Minnesota; Einbeck, W. Germany; W. Berlin, CUQO and Dole, France; and Singapore
In Canada: ITT Components, 4021 Cheswood Drive, Downsview, Ontario M3J 2R8
(416) 630-7971 • TELEX: 96-27103